



Using SSH and sFTP to Access the University's Unix Timesharing Service with Windows

Table of Contents

Overview.....	1
Accessing Unix Timesharing with Windows.....	1
Using PuTTY as an SSH Client.....	1
Installing WinSCP for sFTP.....	3
Using WinSCP for sFTP.....	4
Get Help.....	6

Overview

Your University Computing Account gives you access to file storage space on the Unix Timesharing Service. In order to access this space, you must use one of two secure connection methods: SSH or sFTP.

- SSH, which stands for Secure Shell, is a program that enables you to securely log in to a remote computer. SSH should be used in place of telnet, which is an insecure method of connecting to a remote computer.
- sFTP stands for secure file transfer protocol. It enables you to transfer files securely between two computers. sFTP should be used in place of FTP because files that are transferred using FTP are not encrypted.

You can use PuTTY to establish an SSH connection to the Unix Timesharing Service and a program called WinSCP can be used to establish an sFTP connection. This document explains how to connect to the Unix Timesharing Service with these two programs.

Accessing Unix Timesharing with Windows

Using PuTTY as an SSH Client

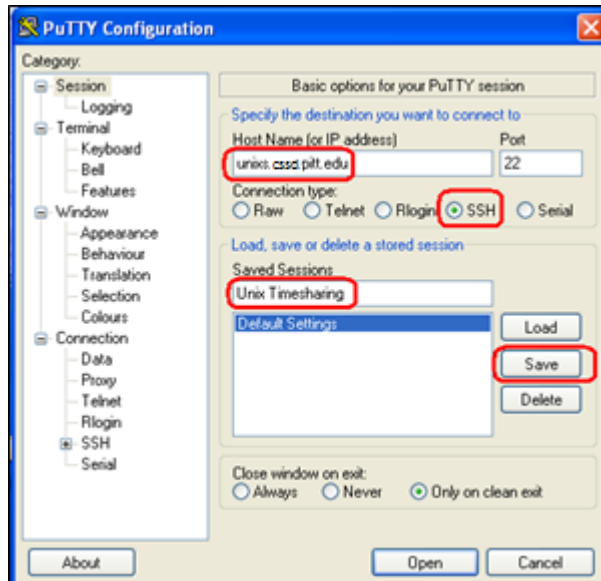
1. If you do not already have PuTTY installed on your Windows computer, open a Web browser to <http://www.chiark.greenend.org.uk/~sgtatham/putty/download.html>. Right click the **putty.exe** file in the **Binaries** section and save the file to your desktop.
2. Double click the PuTTY icon on your desktop to launch it.



3. A security warning will display asking if you want to run the software. Click **Run**.

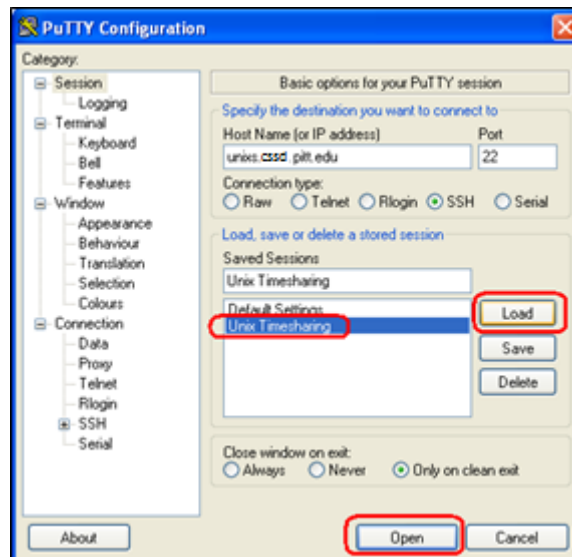


The **PuTTY Configuration** window displays. In the **Host name** field, type **unixs.cssd.pitt.edu**. Make sure **SSH** is selected as the **Connection type**. Enter **Unix Timesharing** under **Saved Sessions** and click **Save**. This will save your settings so you do not have to enter them each time you log in.

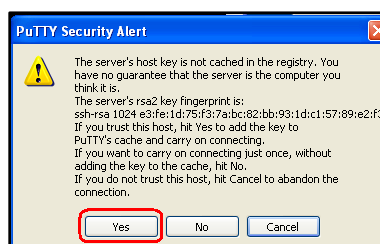


4. Click the **Unix Timesharing** option and click **Load**. This will load your saved session. Next, click **Open**.

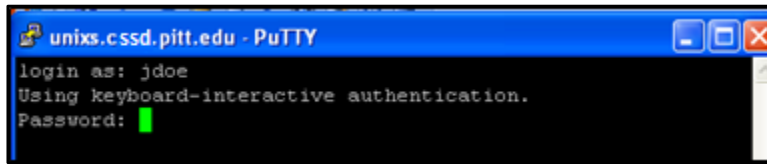
Note: The next time that you use PuTTY, you can simply load and open your saved session. You do not have to enter the Host Name each time.



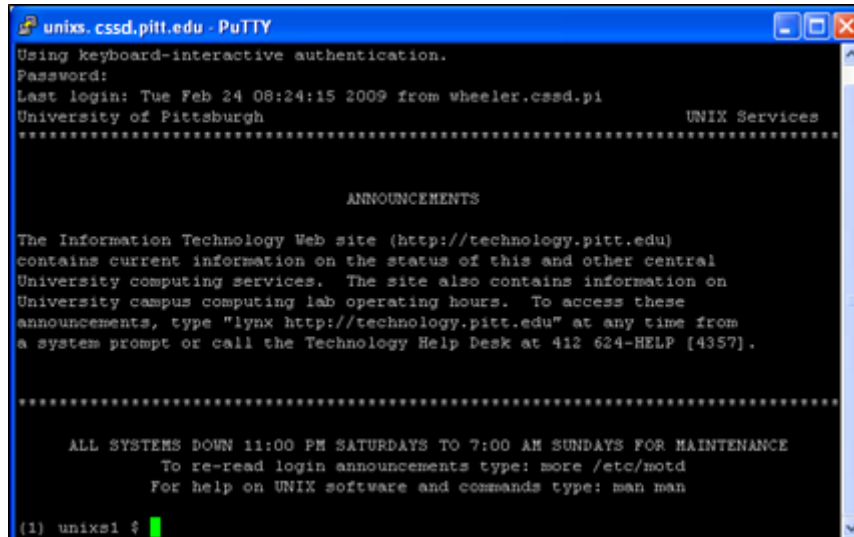
5. The first time that you use PuTTY, you may see the **PuTTY Security Alert** window below. Click **Yes** to cache the server's host key in the registry. This warning should not display again.



6. Type your University Computing Account username and press the **Enter** key. Next, type your University Computing Account password and press the **Enter** key.



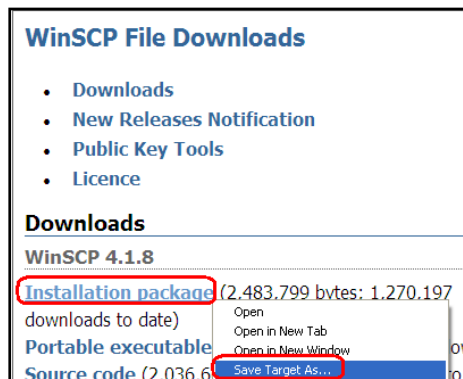
7. The Unix Timesharing Service login screen will display. You are now securely connected.



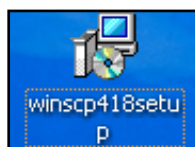
Installing WinSCP for sFTP

1. Open a Web browser to <http://winscp.net/eng/download.php>. Right click the **Installation package** link in the **Downloads** section and select **Save Target As**. Save the file to your desktop.

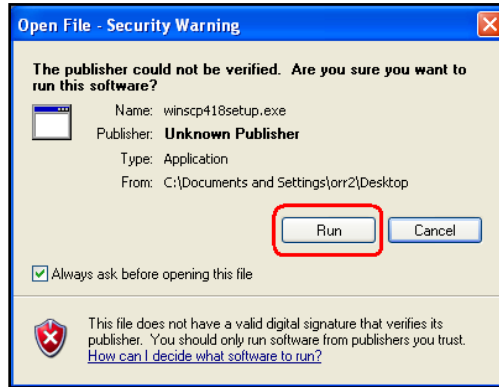
Note: You may have a different version than the one shown in the following image.



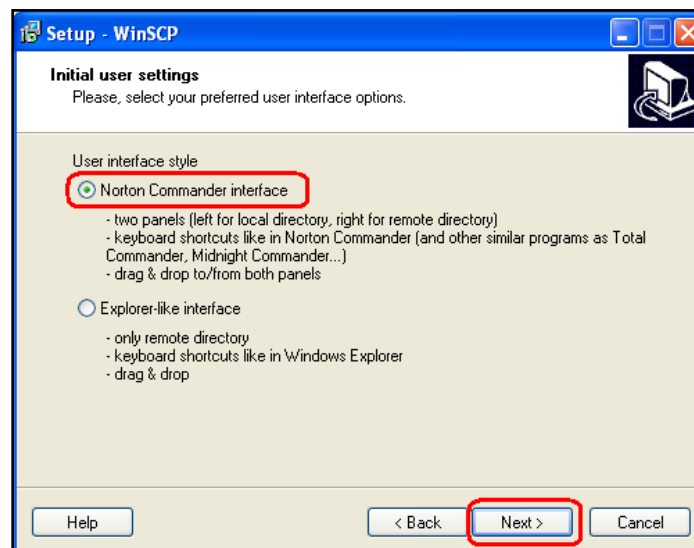
2. Double click the **winscpsetup** icon for the version on your desktop.



3. A security warning will display asking if you want to run the software. Click **Run**.



4. Select the language for the installation and click **OK**. The WinSCP Setup Wizard will display. Click **Next**.
5. Read the license agreement and click **Next**.
6. Select **Typical installation** and click **Next**.
7. Select **Norton Commander Interface** as the interface style and click **Next**.



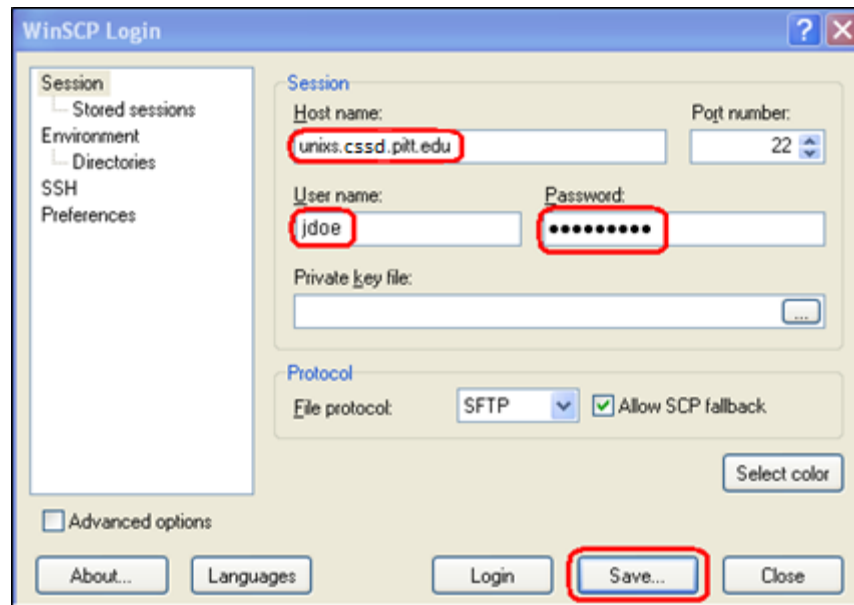
8. Click **Install** to begin the installation process.
9. When the installation has been completed, click the **Finish** button.

Using WinSCP for sFTP

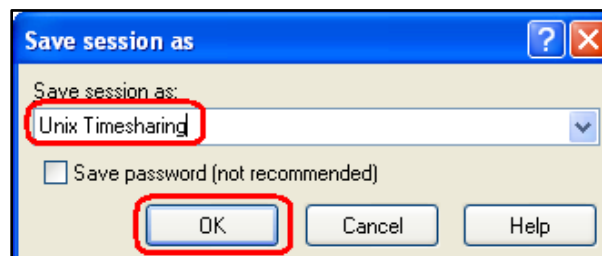
1. Double click the WinSCP icon on your desktop to open the program.



- The **WinSCP Login** screen will display. Enter **unixs.cssd.pitt.edu** in the **Host name** field. Enter your University Computing Account username and password where prompted. Leave the **Port number** set to **22**. Ensure that the **File protocol** is set to **SFTP** and click **Save**.

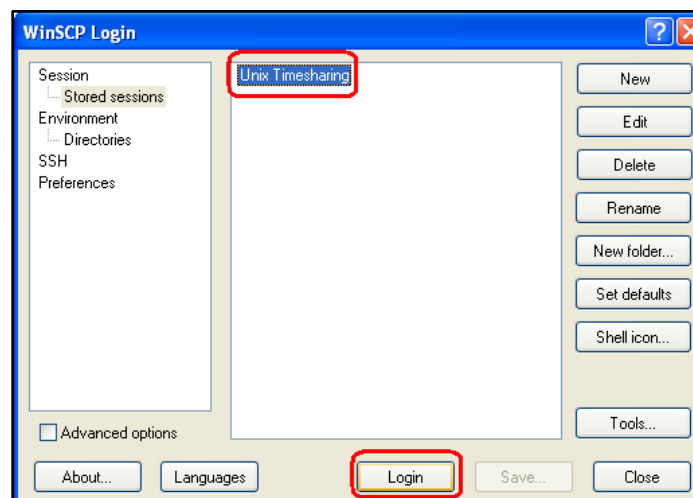


- Enter a name for your saved session (for example, Unix Timesharing) and click **OK**.

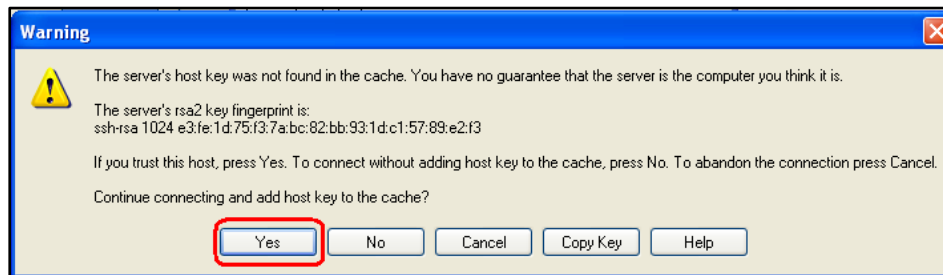


- Select your Unix Timesharing session and click **Login**.

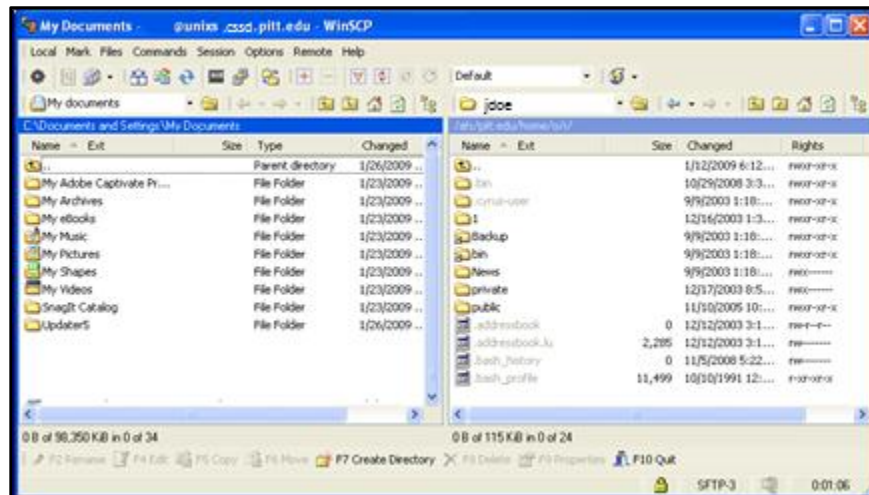
Note: The next time that you use WinSCP, you can simply select your stored session and click **Login**. You do not have to enter the Host Name each time.



5. The first time that you use WinSCP, you may see the **Warning** window below. Click **Yes** to add the host key to the cache. This warning should not display again.



6. You are now securely connected to the Unix Timesharing Service and can copy files back and forth between your computer (left side of window) and the remote system (right side of window).



Get Help

The Technology Help Desk at 412 624-**HELP** [4357] is available 24 hours a day, seven days a week to answer your technology-related questions. Questions can also be submitted via the Web at technology.pitt.edu